

User Roles

School Administrator

Point of contact for the Pisces installation (usually the LMS manager).

The school admin controls where/how Pisces is installed at your school.

Group Administrator

Has permission to view/edit group settings and users within their group.

The group administrator can change the name of the group, set up messaging for the group, and manage user roles.

Group Supervisor

Has permission to join any live session in progress within their group.

The group supervisor can join a 1:1 session (as a third participant) or group session and interact with participants.

Group Leader

Has permission to lead sessions within the groups for which they have been assigned the leader role.

Leaders can start 1:1 or group sessions and maintain leader controls within those sessions.

Student

Has the lowest level of permissions.

Students may participate and see their private personal locker content in all groups to which they belong.

Questions?

- Integration questions may be directed to Joey Bower, VP Partner Success, at jbower@link-systems.com.
- Set-up customization requests (enabling or disabling certain modes, A/V, scheduling, and/or referrals) may be directed to Richard Meade, VP Product Development, at rmeade@link-systems.com.
- Other requests, including training or end-user support, may be submitted to pisces@linksystems.atlassian.net.

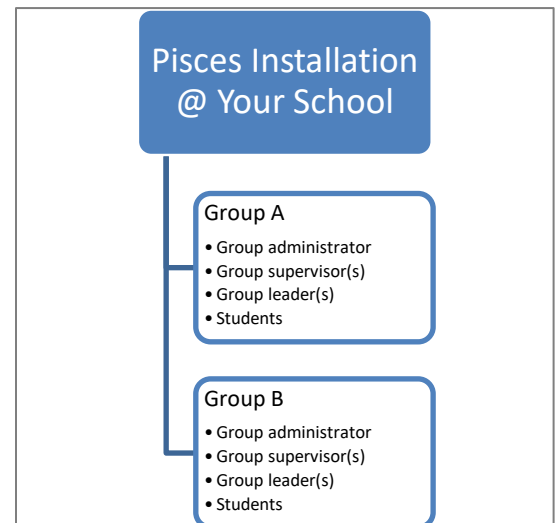


Figure 1. Pisces Groups & User Roles

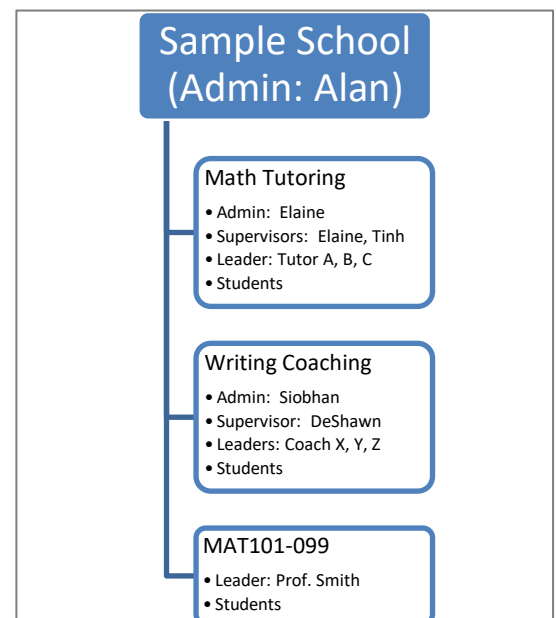


Figure 2. Sample school setup.